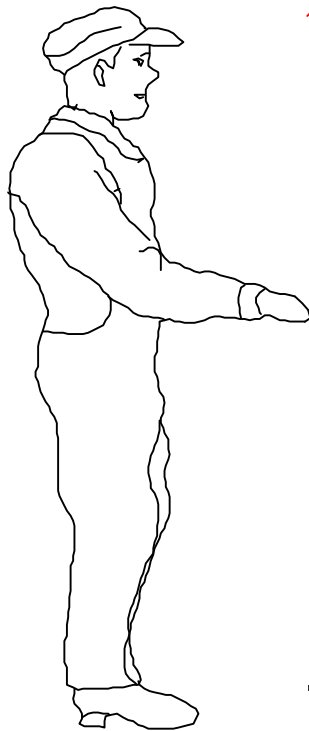
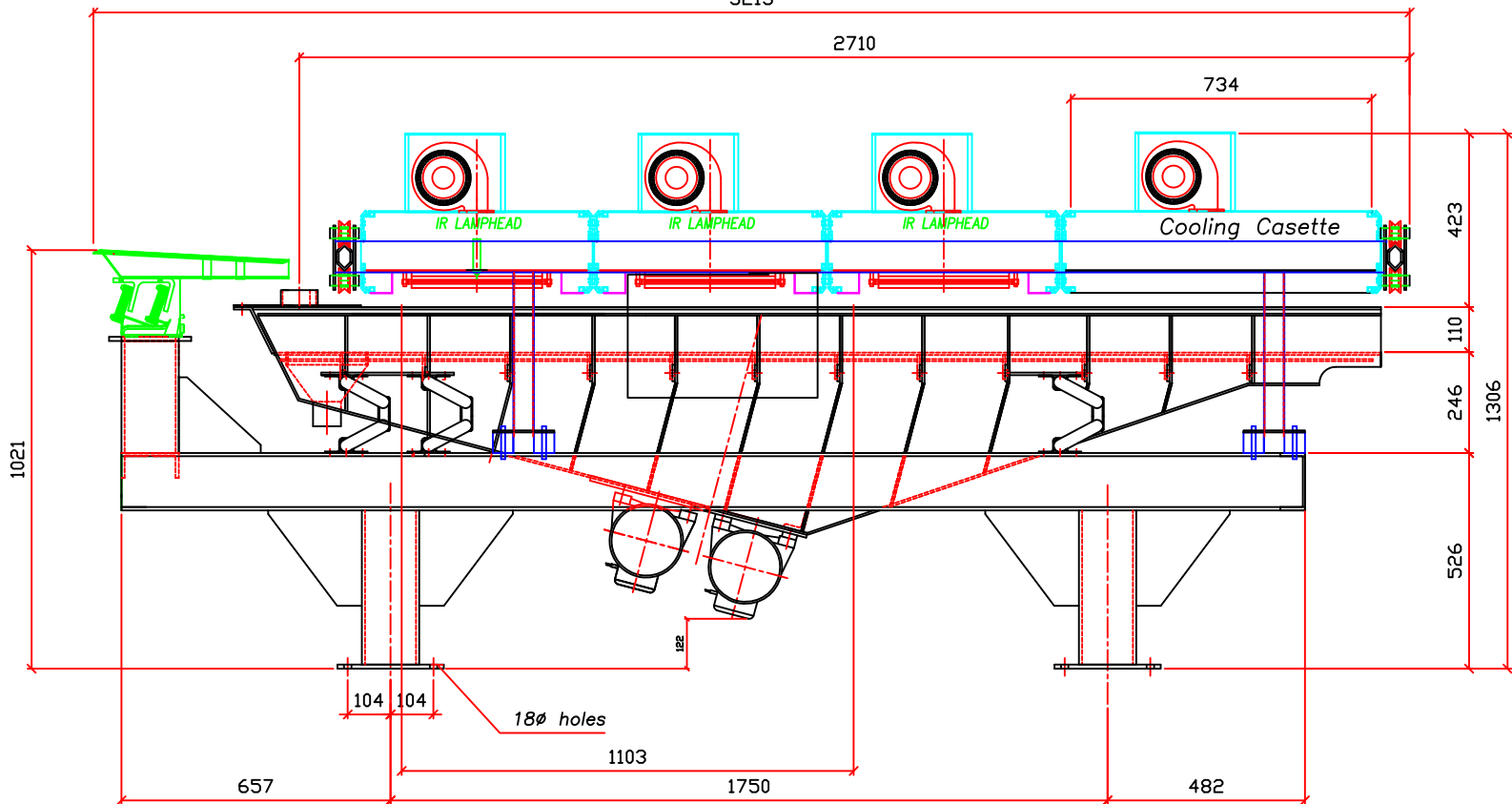


DRAWING FOR LAY-OUT PURPOSES ONLY  
100 KG/HR DRIER



VIEW FROM FEED END




SIDE ELEVATION

MASS	460 kg (5 GS)	V	DYNAMIC COMPONENT	35 N / SPRING
MOTORS	2 x SPV 10.0B	H	DYNAMIC COMPONENT	8 N / SPRING
POWER	0.80 kW (EACH)		ISOLATORS	6 x REF AB 27
SPEED	1500 RPM (50 Hz)		OPERATING CLEARANCE	50 mm

W.39.04					
ITEM NO.	QTY	DESCRIPTION	LENGTH	MATERIAL	MASS

COPYRIGHT RESERVED  
This drawing and all information thereon is the property of UV+IR ENGINEERING and may not be disclosed to third parties or reproduced either wholly or partly without their consent.



UWIR  
ENGINEERING

## GENERAL ARRANGEMENT OF 300x2800 PAN FEEDER DRIER

DRAWN	DATE	CHECKED	SCALE	
<i>L.R.B</i>	<i>11/8/11</i>	<i>—</i>	<i>DNS</i>	<i>A2</i>
DRG. NO.: <i>IRD 2800-300-PGA-01</i>				REV. <i>0</i>